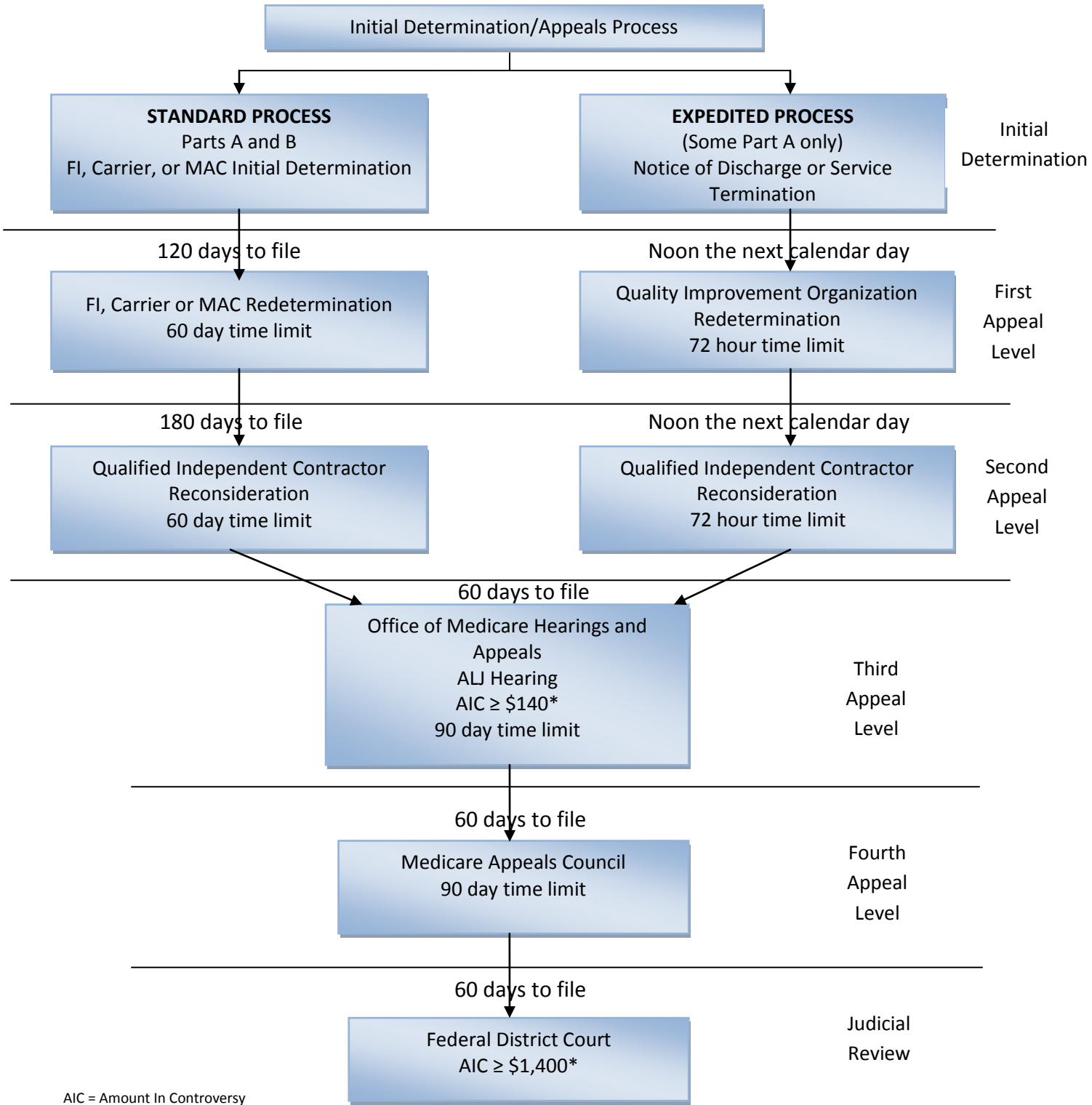


Original Medicare (Parts A & B - Fee-for Service)



AIC = Amount In Controversy  
 ALJ = Administrative Law Judge  
 FI = Fiscal Intermediary  
 MAC = Medicare Administrative Contractor

\*The AIC requirement for an ALJ hearing and Federal District Court is adjusted annually in accordance with the medical care component of the consumer price index. The chart reflects the amounts for calendar year (CY) 2013.